

# Switches & Switch-Adapted Toys

## Product Code

## Product Description

IS1176

### BJ ToyBox Controller



A USB device that enables control of up to four adapted toys or devices from your computer.



- Four 3.5mm switch outputs for connecting multiple devices.
- Plug-and-play USB connection for easy setup.
- Compatible with software like Grid 3 for versatile control options.
- Includes software to create custom control scenes with adjustable buttons, images, colours and scanning options.
- Dimensions: 6.5cm x 6.5cm x 2.8cm.

IS1230

### iSwitch - Red



A robust 75mm Bluetooth switch offering flexible wireless access across multiple devices.



- Built-in 75mm switch with two 3.5mm sockets for extra switches.
- Independently programmable switch functions for versatility.
- Supports single-switch auto-scanning using iOS Switch Control.
- Timed play settings enable 10 or 30 seconds of media playback.
- Rechargeable lithium-ion battery via supplied USB cable.
- Durable design with a 20-metre operating range.
- Manual power-off and lock features prevent accidental activation or changes.

IS0742

### Micro Light Switch



A highly sensitive switch requiring minimal force, ideal for users with limited movement.



- Compatible with devices requiring a 3.5mm mono switch input.
- Activation surface: 4.5cm x 1.3cm.
- Activation force: 11g.
- Provides auditory click and tactile feedback.
- Compact design suitable for various mounting options.

IS2374

### Ping Pong Switch with Mounting Arm and Clamp



An innovative, highly sensitive switch designed for individuals with minimal movement.



- Light-action activation requires minimal force, ideal for users with limited mobility.
- Water and moisture-resistant for reliable performance in various environments.
- Includes Gooseneck arm, Super Clamp, and Mini Ball & Socket mount for flexible positioning.
- Ideal for head use, providing practical solutions for assistive needs.
- Compatible with devices requiring a 3.5mm mono switch input.
- Activation force: 65g.
- Activation area: 3.5cm.

IS3182

### Quha Kajo Soft Button/Pillow Switch

Quha Kajo Soft Button is a soft switch with a large, cushioned surface, ideal for head-controlled activation.



- Soft foam layer enables safe and comfortable pressing.
- Secure safety pin attachment ensures stability during use.
- Easily attachable to pillows or fabric surfaces.
- Dirt-resistant, skin-friendly cover for hygiene and comfort.
- Washable and replaceable cover (up to 60°C).
- Compatible with devices requiring a 3.5mm mono switch input.
- Includes one cover.

IS1334

### Simple Switch Interface

A straightforward USB interface that connects two switches to a computer, facilitating access to switch-enabled software for people with physical disabilities.



- Supports functions such as Space/Enter and Mouse Clicks.
- Retains mode settings even when powered down, ensuring consistent operation.
- Plug-and-play design requires no additional drivers.
- Equipped with two 3.5mm sockets to connect your preferred switches.
- Compact and lightweight for easy portability.
- Compatible with PC, Mac, Chromebook, and other devices supporting USB input.
- Powered via USB connection.

IS1219

### SimplyWorks Receive:2

A compact USB WIRELESS receiver enabling seamless connection of multiple SimplyWorks devices to a computer without additional drivers.



- Supports up to six SimplyWorks transmitters simultaneously.
- Compatible with PC and Mac platforms via USB.
- No additional drivers required for installation.
- Caps Lock and Drag Lock indicator LEDs for user convenience.
- Wireless range exceeds 10 metres, ideal for classroom settings.
- Compact design for easy integration into various setups.
- Dimensions: 7 cm x 2 cm x 1 cm.
- Weight: 20 grams.

IS1217

### SimplyWorks Switch 75mm (requires Receive:2)

A low-profile wireless switch designed for seamless accessibility and control.



- Compatible with all SimplyWorks receivers for versatile switch access.
- 75mm activation area with a low activation force of 50-115g.
- Wireless operation with a 10-metre range for flexible positioning.
- Integrated LED display for easy function selection in computer access.
- Supports mouse emulation and keyboard functions.
- Easily mounted using industry-standard fixing holes.
- Requires 1x CR2032 battery (included).

IS1771

### Smoothie Switch - 75mm or 125mm

A low-profile switch for persons with a physical challenge to access switch adapted toys, communication devices and environmental controls.



- Available in two sizes: 75mm diameter or 125mm diameter.
- Operates across the entire surface for consistent responsiveness.
- Angled design with a low profile for easy access.
- Low operating force with tactile feedback for user assurance.
- Available in four colours: red, yellow, blue, and green.
- Secure switch top is not easily removed which reduces distractions.
- Compatible with devices requiring a 3.5mm mono switch input.
- Features standard fixing holes for easy mounting.



IS0753

### Specs Switch

A compact wired switch with a 3.5cm activation surface, ideal for versatile mounting.



- Available in black, blue, green, red, or yellow.
- Includes a flush base and a strap base for flexible positioning.
- 183cm cord length for convenient device connection.
- Activation force of 100g with 0.06cm travel distance.
- Provides tactile and auditory click feedback.
- Compatible with devices requiring a 3.5mm mono switch input.
- Dimensions: 5cm x 5cm x 1.6cm.



IS1216

### USB Switch

A low-profile 75mm switch with a built-in USB interface for versatile accessibility.



- Programmable for various keyboard, mouse, and gamepad functions.
- Advanced settings adapt for tremors, ataxia, and motor deficits.
- Two built-in 3.5mm sockets allow connection of additional switches.
- Works with PC, Mac, Chromebook, and Android tablets.
- Low-profile design with low operating force.
- Activation area: 7.5cm.
- Colour: Purple only.



IS2824

### Vibe-Lite Switch

A switch providing tactile, auditory, and visual feedback for enhanced accessibility.



- Three operation modes: momentary, latch, or timed settings.
- Adjustable timer from 5 seconds to 2 minutes.
- Large 11cm activation area with an activation force of 85g.
- Provides sensory feedback, with features adjustable as needed.
- Lightweight and portable for ease of use.
- Compatible with devices requiring a 3.5mm mono switch input.
- Batteries: 2x AA (not included).



IS2647

### Switch Adapted Toy - Bubble Fun Machine



A switch-adapted bubble machine designed for fun and engaging cause-and-effect activities.

- Activates bubbles with a simple press and release of a switch.
- Ideal for cause-and-effect learning and sensory play.
- Compatible with any 3.5mm switch (not included).
- Comes with 236ml of bubble solution for immediate use.
- Requires supervision during operation.
- Colour may vary.
- Size: 21x15 cm.
- Requires 4x AA batteries (not included).



IS3236

### Switch Adapted Toy - Blue Whale Bubble Machine



A fun and engaging Blue Whale bubble machine designed for cause-and-effect activities.

- Activated with a 3.5mm switch (not included) for interactive play.
- Sends bubbles upwards for a captivating sensory experience.
- Ideal for developing cause-and-effect understanding.
- Includes 118ml of bubble solution to get you started.
- Size: 23x18 cm.
- Requires 4x AA batteries (not included).



IS2117

### Switch Adapted Toy - Domino Train Set



A switch-activated domino train that builds lines of dominoes while chugging along, promoting cause-and-effect learning.

- Activated with a 3.5mm switch (not included) for interactive play.
- Places dominoes in a perfect line for knocking down.
- Sounds a bell for added sensory engagement.
- Encourages early switch use and motor planning.
- Requires 2x AA batteries (not included).



IS3183

### Switch Adapted Toy - Flap and Wobble Penguin



A switch-adapted plush penguin toy that flaps, wobbles, and plays music to teach cause and effect.

- Activates flapping, wobbling, and music with a 3.5mm switch (not included) or by pressing its tummy.
- Features soft plush fabric, high-contrast black and white wing patterns, and crinkly feet to stimulate visual, tactile, and auditory senses.
- Height: 21 cm.
- Requires 4x AA batteries (not included).



IS1773

### Switch Adapted Toy - Flappy the Elephant



A switch-adapted plush elephant that plays peek-a-boo and sings for interactive sensory play.

- Activates peek-a-boo or singing with two 3.5mm switches (not included).
- Also works by pressing Flappy's feet for manual activation.
- Sings 'Do Your Ears Hang Low' for musical engagement.
- Encourages cause-and-effect learning and sensory interaction.
- Height: 30 cm.
- Requires 3x AA batteries (not included).

IS2933

### Switch Adapted Toy - Laugh and Learn Big Pink Puppy



A switch-adapted plush puppy that encourages movement, learning, and sensory play with music and lights.

- Activates with a 3.5mm switch (not included) or by pressing its belly.
- Includes 90+ songs, sounds, tunes, and phrases.
- Teaches alphabet, counting, colours, and animal sounds.
- Features soft paws for interactive high-fives.
- Encourages sensory engagement and cause-and-effect learning.
- Height: 40 cm.
- Requires 3x AA batteries (not included).

IS2971

### Switch Adapted Toy - MP3 Player



A switch-adapted MP3 player designed for accessible music and audiobook playback in any setting.

- Play/Pause and track navigation controlled via two 3.5mm switches (not included).
- Supports MP3 and WAV file playback for versatile audio use.
- Features a 3.5mm headphone socket for private listening.
- Ideal for users with visual impairments, Alzheimer's, autism, or motor challenges.
- Built-in rechargeable battery provides 4-6 hours of playback.
- Size: 18x8x5 cm.

IS2614

### Switch Adapted Toy - Pip the Penguin / Dancing Penguin



A switch-adapted dancing penguin that waddles, flaps its wings, and squeaks for interactive play.

- Activates movement and sounds with a 3.5mm switch (not included).
- Engages children with enthusiastic waddling and wing flapping.
- High-contrast black, white, and red design ideal for children with CVI.
- Encourages cause-and-effect learning and sensory engagement.
- Requires 2x AA batteries (not included).



IS1213

### Switch Adapted Toy - Robbie Rabbit / Bouncing Bunny



A switch-adapted rabbit that hops, raises its ears, and squeaks for engaging cause-and-effect learning.

- Activates movement and sounds with a 3.5mm switch (not included).
- Hops forward, sits up, lifts ears, and squeaks for interactive play.
- Encourages early switch use and motor engagement.
- Provides a fun and motivating sensory experience.
- Requires 2x AA batteries (not included).



IS3264

### Switch Adapted Toy - Sensory Glitter Waterball Lamp



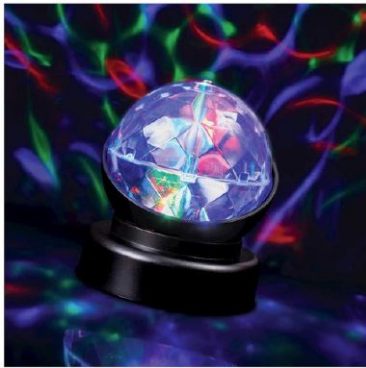
A captivating sensory device featuring large hexagon-shaped glitter illuminated by colour-changing LED lights.

- Operates with any standard 3.5mm switch (not included).
- Provides calming sensory lighting to engage users.
- Black base with multicoloured LED lights.
- Height: 14cm.
- Requires 3x AAA batteries (not included).



IS2613

### Switch Adapted Toy - Spinning Kaleidoscope Ball



A switch-adapted kaleidoscope lamp that creates a captivating display of multi-coloured, spinning lights in darkened environments.

- Compatible with any 3.5mm switch (not included).
- Ideal for sensory stimulation and visual tracking exercises.
- Easy to operate with simple switch activation.
- Suitable for use in sensory rooms or personal spaces.
- Requires adult supervision during use.
- Dimensions: 12 cm x 8 cm; Weight: 200 grams.
- Requires 3x AA batteries (not included).



IS1011

### Switch Adapted Toy - Thomas the Tank Engine



A switch-adapted remote-control Thomas toy that offers engaging movement, lights, and sound for interactive play.

- Controlled via two-button infrared remote (included) or 2x 3.5mm switches (not included).
- One switch turns Thomas on the spot; the other moves him forward.
- Ideal for developing two-switch skills and choice-making.
- Features lights and sounds for enhanced sensory engagement.
- Large wheels allow movement on most surfaces.
- Size: 17x12x10 cm.
- Requires 6x AAA batteries (not included).



IS3265

### Switch Adapted Toy - Vibrating Plush Ball Pillow



Switch-adapted circular cushion providing soft vibrations for sensory stimulation.

- Activates via a 3.5mm switch for accessible use (switch not included).
- Soft velour cover, surface washable.
- Ideal for sensory needs with a gentle, calming vibration.
- Available in blue or grey colours.
- Size: 40 x 40 x 20 cm; Weight: 800 g.
- Requires 2x AA batteries (not included).



IS2892

### Switch Adapted Vibrating Pillow



A switch-adapted vibrating pillow designed for relaxation and sensory stimulation.

- Activates gentle vibration with a 3.5mm switch (not included).
- Available in six colours: Red, Blue, Purple, Orange, Teal, or Pink.
- Covered in wipeable fabric for easy cleaning.
- Provides soothing sensory input for comfort and relaxation.
- Size: 30x30 cm.
- Requires 2x D batteries (not included).



## Icon Key



Connects via USB



Connects Wirelessly



Connects via Bluetooth



Requires batteries, but not included



Connects via 3.5mm mono jack



Switch accessible software